

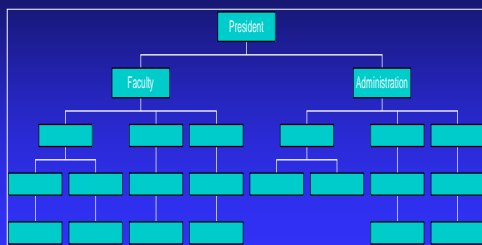
Hazardous Waste Psychology

R. Steven Fratoni
Environmental & Safety Compliance Manager
Western New England College
Springfield, Massachusetts

1. No Walls

- Single Corporate Entity.
- “To the Board of Trustees of ...”
- Top Down Management?

Vertical vs. Horizontal



2. Be Proactive.

- You are never going to please everyone anyway.
- “The Art of Being Suitably Vague”
 - ◆ Write to your reality, not to your perfection.

Example:

- **SPILL CLEAN-UP MATERIALS**
- -
- What to Do in Case of a Chemical Spill.
- -
- 1. Consider the hazardous properties of the spill before attempting any action.
-
- 2. Contact others if their help may be needed or if there is a potential threat to:
 - Other Employees or Students,
 - Our Neighbors or,
 - The Environment.

Example:

- Standard Operating Procedure for All College Employees.
 - -----
 - Waste Water from Cleaning Processes.
 - -----
- All of the waste water from any cleaning process is to be disposed of onto a building drain. This Waste Water MUST NOT be dumped out side of the building.
 - -----
- A “Building Drain” is any drain inside of the building such as a slop sink, floor drain, tub/shower drain, or any other drain connected to the sanitary sewer system
- “Outside of the building” includes lawn, wooded areas, at the curb, and all storm grates.

2. Be Proactive.

- Track down “Legacy” wastes.
 - ◆ Participate in campus changes.

3. Stay Connected.

- No one knows everything.
 - ◆ Stay connected to your peers.
- Don't eat lunch with people you like.
- The world is divided into two groups:
 - People you work with and,
 - People you work around.

4. Integrated Programs.

- “Go with the flow.”
- Don't forget your vendors.
- Other people's programs.

5. Teachable Moment.

- Don't follow your schedule.
 - ◆ Follow their interest.
- "Rapid Response" training program.

6. Service Orientation.

- Offer services, not constraints.
- Customize products.

Western New England College
environmental & safety compliance

ACADEMICS ABOUT US ALUMNI ADMISSIONS ATHLETICS VISITING CONTINUING ED OFF-CAMPUS PROGRAMS
CALENDAR NEWS & EVENTS DIRECTORY RESOURCES CONTACT US SEARCH

OFFICES

- CHEMICALS ON CAMPUS
 - OSHA Hazard Communication
 - WNEC HazCom Program
 - WNEC HazCom Poster
 - HazCom Training Manual
- LABORATORY SAFETY
 - OSHA Chemical Hygiene Plan
 - Chemical Hygiene Poster
 - Chemical Spill Response
 - Laboratory chemical Waste
 - Chemical Information System
 - Laboratory Safety Links

WELCOME

Welcome to the website for Western New England College's Environmental & Safety Compliance Office. This website has been established as another aspect of the College's "atmosphere of personal concern" for all members of the College community. The goal of this website, despite the occasional complexity and detail, is really a simple one: to make the working and learning experience at Western New England College a safe one.

Direct Access to MSDSonline™

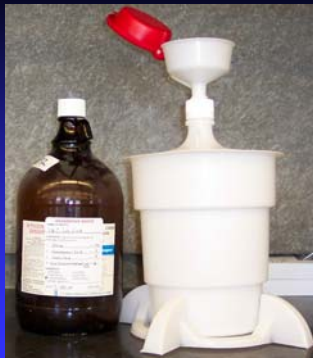
Mission Statement

The mission of this website is to provide direct and timely information to members of the College community on issues of regulatory and professional standards regarding occupational safety and the environment. The College's Environmental and Safety Compliance Manager maintains this site as a service to those needing access to the College's written safety programs, chemical safety and disposal information, laboratory chemical labeling assistance, and safety reference material.

These programs are intended to fulfill, in part, the College's obligations under the Connecticut Labor and Health Act of 1991.

7. Higher Level of Control.

- Engineering controls.
- “Folklore.”





Hazardous Waste Psychology

■ Questions?
